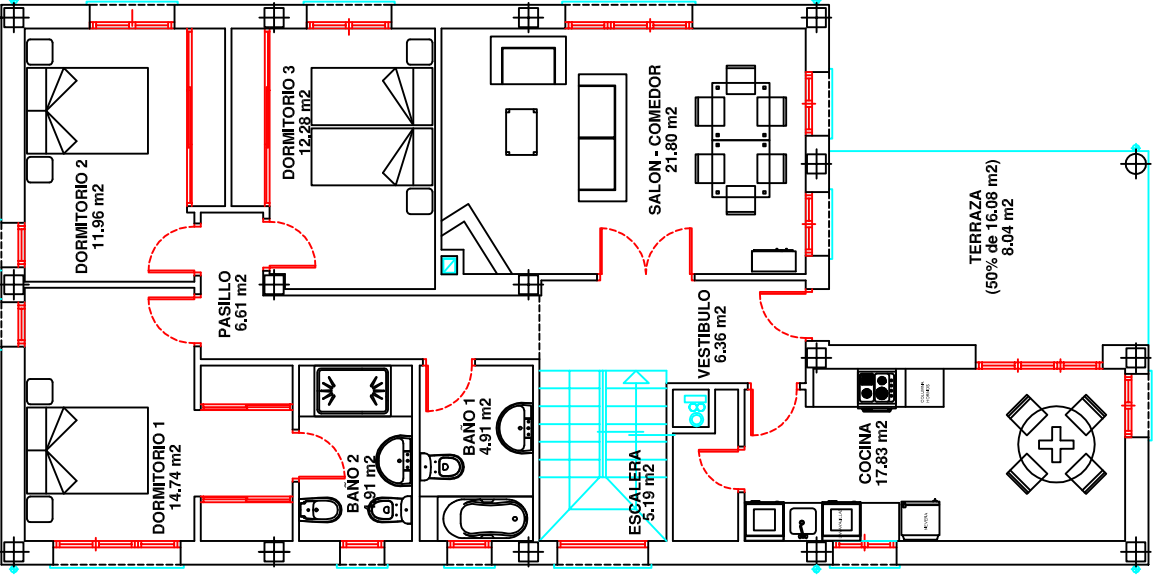
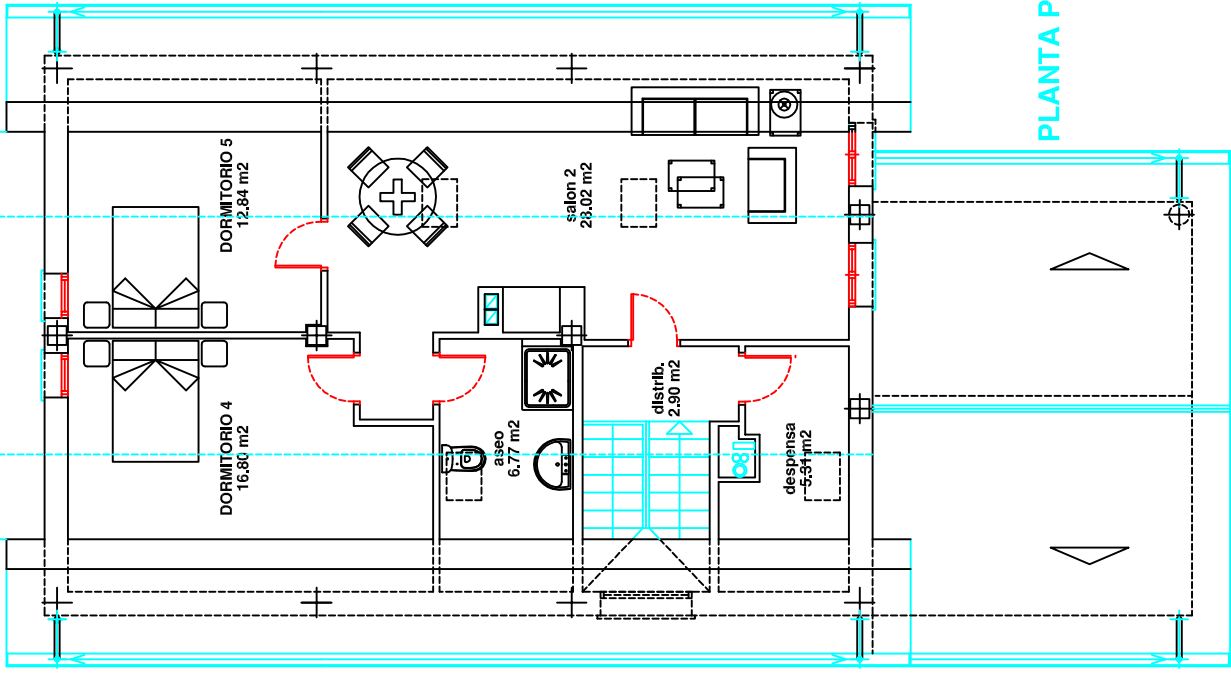


PLANTA SEMISOTANO



PLANTA BAJA



PLANTA PISO

RESUMEN DE SUPERFICIES		
PLANTA	SUPERFICIE EN VIVIENDA	
	UTILES	CONSTRUIDOS
SEMISOTANO	126.04 m ²	147.19 m ²
BAJA	122.67 m ²	147.76 m ²
PISO	72.64 m ²	83.98 m ²
TOTAL VIVIENDA	321.35 m²	378.93 m²

